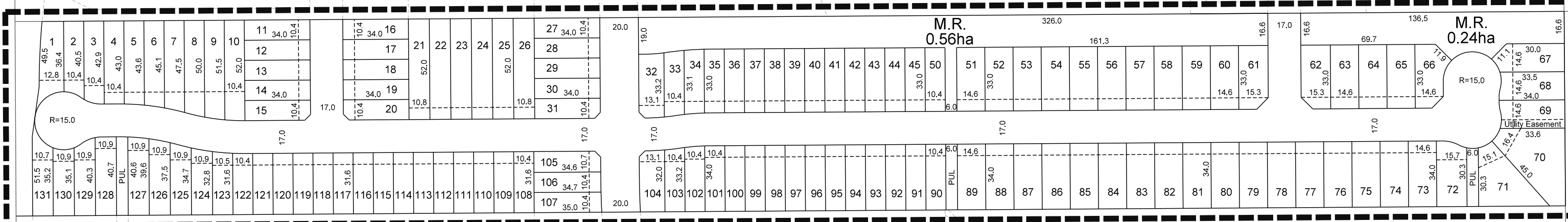
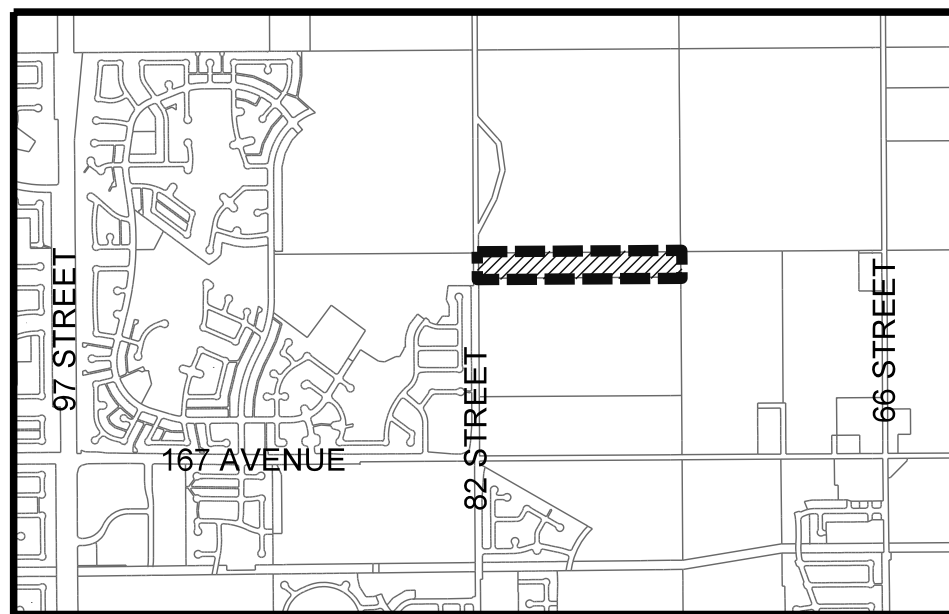


NW 1/4 SEC 3 - 54 - 24 - 4

SW 1/4 SEC 3 - 54 - 24 - 4



82 STREET



Location Plan - NTS

# PROPOSED SUBDIVISION CRYSTALLINA NERA

SW 1/4 SEC 3 - 54 - 24 - 4  
CITY OF EDMONTON

SUBDIVISION BOUNDARY CONTAINING  
APPROX. 8.0ha AND 131 LOTS

